

ABOUT



Rotary
Rosebud-Rye



WHY JOIN?



Rotary Rosebud Rye

Who Rotary is

Find us at our Club Rooms

26 Henry Wilson Drive
Rosebud VIC 3939

Contact Us

(03) 5986 6505
5986 8896 (Warehouse)

Rotary brings together a global network of volunteer leaders who dedicate their time and talent to tackle the world's most pressing humanitarian challenges and support their local communities.

Rotary connects 1.4 million members from more than 200 countries and geographical areas. The work of Rotary impacts lives at local, national and international levels.

What Rotary does

Visit Us

www.rosebudryerotary.org.au

Email:

membership@rotaryrosebudrye.org.au



Rotary in Rosebud-Rye

Correspondence:

P O Box 167, Rosebud Vic 3939

We meet 1st, 2nd & 4th
Wednesdays over Dinner
6.00 / 6.30pm. Cost: \$20
3rd Wednesday via Zoom 7pm
5th Wednesdays Social Evening with
partners

Club chartered 26.5.1955

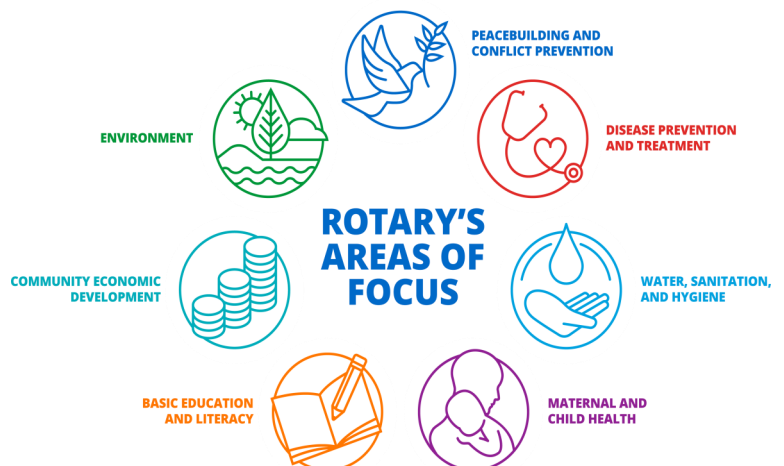
ABN 64 581 598 375

V. Oct 23

As a world-wide organisation Rotary members believe that we have a shared capacity to take action on our world's most persistent issues.

Through the Rotary Foundation, 46,000+ Clubs work together to:

- Promote peace
- Fight disease
- Provide clean water, sanitation, and hygiene
- Save mothers and children
- Support education
- Grow local economies
- Protect the environment



We work differently

We see Differently: Our multidisciplinary perspective helps us to see challenges in unique ways

We think differently: We apply leadership and expertise on social issues - and find unique solutions

We act responsibly: Our passion and perseverance create lasting change

We make a difference at home and around the world:

1.4 million Rotarians can be found in our community and across the globe



Getting Involved

These are some of our current community service and fundraising projects you choose how you would like to participate.

Mentoring: BEAM at Rosebud Secondary College - Just one hour a week (during term time) can help a young person to change their life's outcomes OR Young Change Agents - occasional - working with students to develop their entrepreneurial skills.

Rye Foreshore Market: (*opposite Rye Post Office*): 1st Saturday morning of each month, 7.30am to 1pm. Help stall holders, collect site fees, etc.

Rotary Op Shop: (*opposite Rosebud Plaza*): Join the regular roster, or help occasionally. Open 10am to 4pm Monday to Friday. Call: **5986 8896**

Rotary Opportunity Warehouse: (*26 Henry Wilson Drive, Rosebud*): Join the regular roster or help occasionally. We urgently need volunteers for customer service, merchandising, and helping as a driver or jockey on the pick-up truck. Open 7 days, 10am to 4pm. Call: **5986 8896**

Cooking Sausages or Egg & Bacon Rolls: (*outside Woolworths Rye, or Rosebud Market on 2nd Saturdays*): You can help with transporting and serving 3-hour shifts.

Attending Awards Nights at local Primary Schools: Represent the club at Awards Nights where students are presented with achievement awards.

Supporting students in preparing for Rotary Youth Programs: may include public speaking preparation, or preparing for interview for National Youth Science Forum.

Annual Amateur Radio Expo: (*Eastbourne Primary School*) assist with catering and car parking.

New Year's Eve: (*Rosebud Police Station*) BBQ before first responders head out for a 'big night on the beat' of NYE.

Film Nights are held annually to support the Polio Plus campaign to rid the world of polio.

Peninsula Film Festival: represent the club in awarding of prizes for budding film directors and crews, together with providing a sausage sizzle.

Practical Support Contribute time and practical assistance to address a local needs as they arise.

PLUS other opportunities to assist those who are doing it tough through disadvantage, family breakdown, illness or other circumstances.

Our Impact

Snapshot of some work with Young People

Encouraging local students through School Awards and other supports like Hardship Scholarships for students doing it tough

National Youth Science Experience (NYSF) Sponsor 2-week experience for Years 11 & 12 students wishing to pursue a career in STEM (science, technology, engineering and maths)

Rotary Youth Leadership Awards (RYLA) Sponsor 18-30 yo's to annual 6-day camp focuses on personal development, leadership, and teamwork.

Rotary Youth Program of Enrichment (RYPEN) - Sponsor 14-17 yo's to 3-day camp; builds confidence, self-awareness, decision making skills, leadership, and friendships.

Model United Nations Assembly (MUNA)

Year 10, 11 and 12 students research a particular nation and then debate with other participants representing other nations in a mock United Nations Forum. MUNA encourages young people to learn about other countries and develop an understanding of the UN, develop debating skills, and gain self-confidence in public speaking and leadership.



Snapshot of some International Projects

Polio Plus: Rotary's project has reduced polio by more than 99.9% - on the final push now.

Rotarians Against Malaria (RAM): Rotary's project has resulted in deaths falling by 60%; our Club supports the Vanuatu program.

Clean Water for 2 Philippines communities: Funds raised provided two Sky Hydrants to provide cheap, continuous clean water.

Rotary Koshish Garden Project, Nepal: Funds raised enabling mental health patients to establish garden for improved health benefits, reducing costs and good nutrition.

Rotary in Rosebud-Rye

We're part of Rotary International: While each Rotary Club is autonomous, we are all part of the world-wide fellowship of Rotary International, and subscribe to the Rotary International Ideals of Service.

Meetings. We usually meet weekly (*see opposite page*), we understand that family and work take priority, and members are not obliged to attend each week. Our program includes guest speakers, project reports, and new project presentations.

We are welcoming, inclusive and respectful; however, we do not shy away from robust debate; where members express contrary views - good manners and humour are maintained.

Helping Others. We live in a constantly changing world and, guided by our planning, we work to improve lives at both the local, national and international levels. This includes:

- Helping families in need
- Supporting those impacted by bushfire, floods, wars and earthquakes
- Supporting people in developing countries, e.g. our Rotary Koshish Garden Project at a Mental Health facility in Nepal
- Working towards a polio-free world

Much of this work could not be achieved just as a local service group - being part of a world-wide network enables Rotarians to achieve much more.

Keeping Informed. Our Club Newsletter keeps members up to date, and the 'Rotary Down Under' magazine informs the Rotary community about activities across Australia and New Zealand.

No Politics or Religious Affiliation. Rotary is a non-political, non-religious global organisation focused on improving the wellbeing of local and international communities and bringing about world peace and understanding.

Safe and Sound. We are a Child Safe organisation - all members hold a valid Working with Children Card. Our Board of Directors meets monthly, and reports regularly to Club Members.

Costs. We set the membership fee each year, at approx. \$265. Members are also welcome to participate (at their expense) in

- Rotary training courses covering a range of topics including leadership (Rotary Leadership Institute),
- Annual District or International Conferences
- Seminars with excellent and thought-provoking presenters

Want to know more? Come along and check us out!

Call 5986 6505 or email: secretary@rotaryrosebudrye.org.au
or call us 5986 6505



The Benefits

Network We build a network of contacts and build lifelong friendships

Have Fun! Be with people who share common goals and enjoy each other's company

Learn with a committed, connected peer group

Make Real Change Through involvement in Rotary projects

Gain a Sense of Purpose Serving our community brings people together

Share and Lead and use your experiences and skills

Give back You choose where to lend your support

Join a world-wide community Wherever we travel in the world, we are welcome to attend other Rotary Clubs.

